

Specifications

Max. Flow	250 ± 35	l/min
Min. operating temperature	-25	°C
Max. operating temperature	80	°C
Weight	4	kg
Material	Steel	
Oil viscosity	40	cSt

Spare parts

Part no.	Description	Pressure
14772250	Pressure relief cartridge	250 bar
14842209	Bonded Seal	

General information

A hose burst valve is a flow dependent valve that must be mounted direct on the cylinder.

The hose burst valve will close as soon as the flow from the cylinder will exceed a set value, for this valve 215 L/min (e.g. this happens when the hose burst).

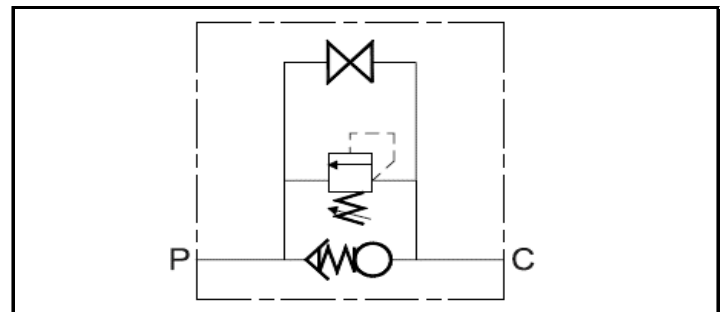
In case the valve closes suddenly, an integrated pressure relief valve will shortly open to reduce pressure peaks in the cylinder. After a short period the pressure relief valve will close and the lowering of the cylinder will be stopped. Opening the valve can be done by connecting a new pressure hose between the hose burst valve and the tipping valve. Put the tipping valve in the position tip until the cylinder starts to tip. The hose burst valve is now open again and the cylinder can be lowered.

In case the valve is blocked in full tipped position, the pressure relief valve can be unscrewed by one turn, which will result in opening of the valve.

The advantages of mounting a hose burst valve are:

- Secure the driver and the truck from falling load in case of a hose burst.
- Protects the environment against huge oil spoilage in case of a hose burst.

Hydraulic symbol



Mounting instructions

1. Make sure that the O-ring is present in the groove (C-port) of the valve.
2. Press the Hose burst valve gently (with C-port) on the 1" SAE inlet of the cylinder.
3. Mount the Hose burst valve on the cylinder using the four M10 bolts & Nord lock washers. Torque each bolt with a torque wrench to 40 Nm.
4. Mount the 1" Adapter with a bonded seal on the 1" inlet (P-port) of the Hose burst valve. Torque the adapter to 100 Nm.

Extra mounting parts

Part no.	Description	Qty.
01226187	O-ring	1
15014261	Bolt HSHC M10x90	4
15024085	Washer Nord lock M10 YZP	4

Notes

- Lowering with a loaded body might cause the valve to close tipping will reset the valve.
- O-ring is delivered with valve.