

# HYVA CYLINDER



**FSH47568C**

Front end cylinder with eye

type

FE 169-5-06730-001B-K1816-HC

tipping weight

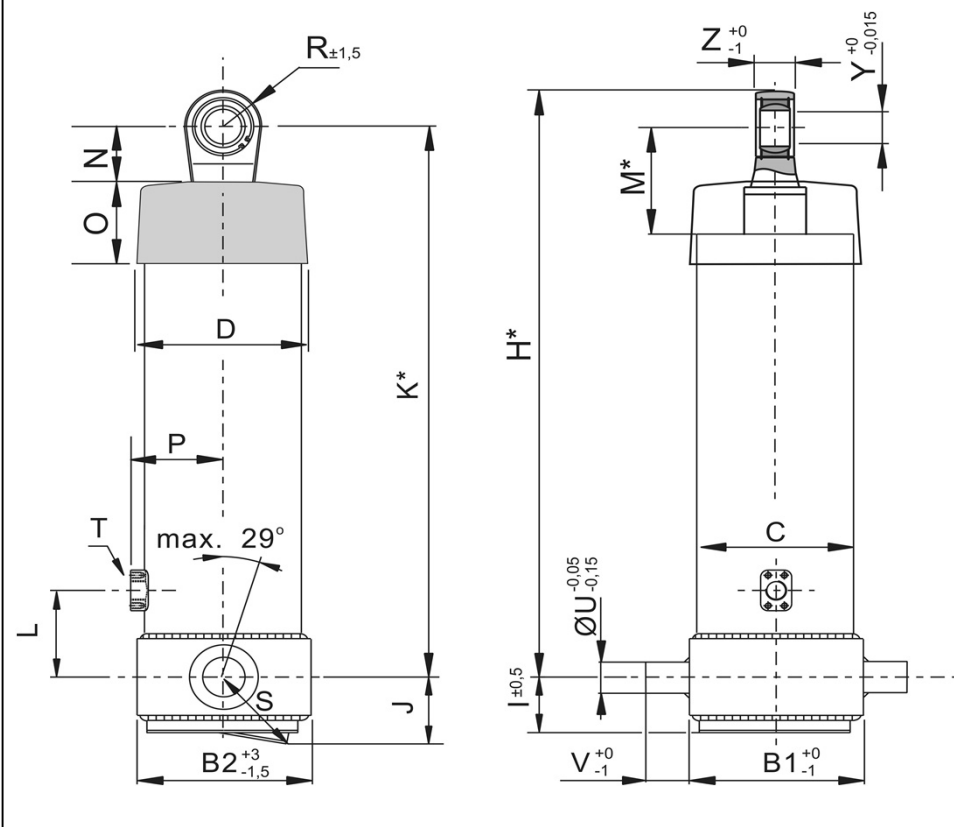
30-48 ton

page # 1 / 2

closed length (K)

1811-1846 mm

front & side view cylinder



	1	2	
A			mm
B	245	224	mm
C	191		mm
D	216		mm
E			mm
F			mm
G*			mm
H*	1869		mm
I	65		mm
J	106		mm
K*	1816		mm
L	190		mm
M*	122		mm
N	65		mm
O	100		mm
P	123		mm
Q			mm
R	53		mm
S	127		mm
T	1" SAE		
U	60		mm
V	65		mm
W			mm
X			mm
Y	50.3		mm
Z	42		mm

\*incl.20 [-5;+30] mm pull out on piston

## specifications

weight cylinder only	275 kg
total volume	107 L
working volume	98 L
maximum pressure	170 bar
maximum pump flow	137 L/min
maximum cylinder angle to front	30 °
maximum thrust first stage**	35 ton

\*\*when cyl. mounted at a large angle, thrust first stage may become too high: see Hyva Tipper Program

## technical notes

This cylinder is a lifting device only and may not be used as structural member and may not be subjected to any side load. Working pressure depends on application; it may never exceed the maximum pressure stated. Cylinder painted grey (colour DB7350). Max duration of extension is 0,5 hours (excluded HC).

See specification sheet CYL-0019 for mounting instructions, OIL-0011 for oil specifications and 015-BRA01 for bracket specifications.

extension	1	2	3	4	5	6	7	8	9	
effective diameter [mm]	169	149	129	110	91					total
stroke [mm]	1470	1490	1490	1490	790					6730

## tipping weight

tipping weight at maximum pressure of 170 bar and C is 158 mm

BL (body length); OH (rear overhang); X=Ycog (vert. pos. centre of gravity); Qo (pivot length); C (bracket length);  At = stroke x 60 / Qo	BL	8900			8500			8100		
	OH	200	500	800	200	500	800	200	500	800
At	45	47	49	48	50	52	50	53	55	
Ycog										
600	30	32	34	31	33	36	32	35	38	
900	32	34	37	33	36	39	35	38	43	
1200	34	37	40	35	39	44	38	42	48	

Subject to change without notice. No rights reserved.

Schmitz ID-Nr: 1197084

DO-E FSH47568C / 17-01-27 / RV AD

# HYVA CYLINDER



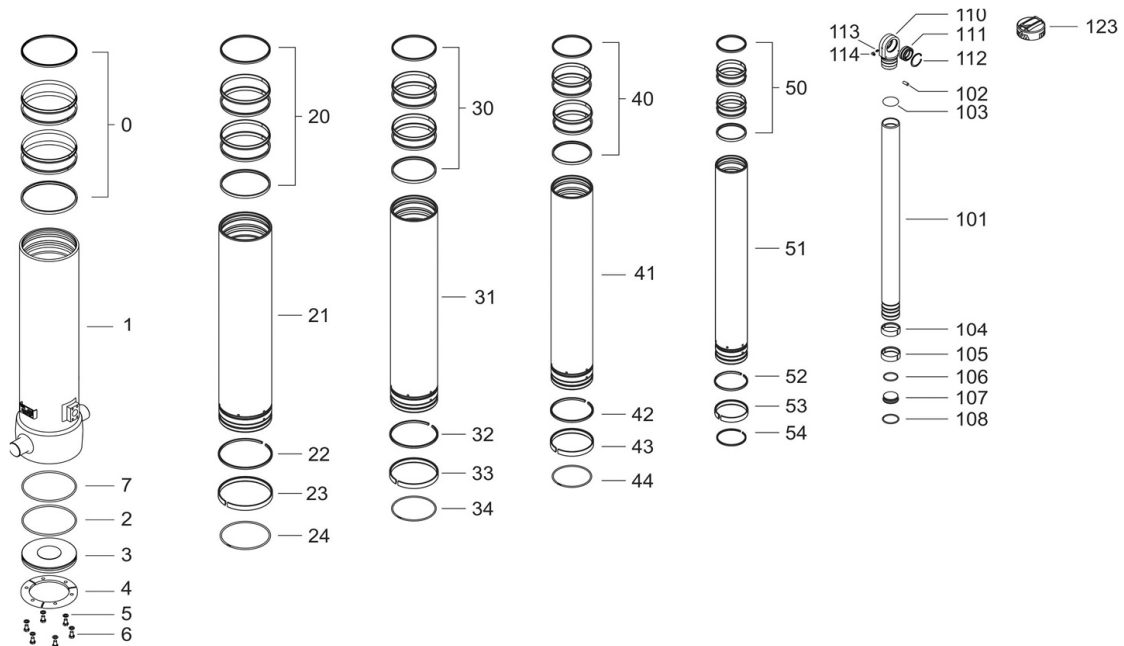
## FSH47568C

Front end cylinder with eye

type

FE 169-5-06730-001B-K1816-HC

page # 2 / 2



### Spare part list

Pos	Part no.	Description	Qty.
0	71802191 K	PACKSET FL 191	01
1	72517690	BASE 191-1749-4/4SAE-190	01
2	71870040 K	SEAL BOTTOM PLATE 191	01
3	71821191	BOTTOM PLATE 191	01
4	71820191	LOCKING PLATE 191	03
5	01732559 K	SPRING WASHER M8 SET	01
6	01732055 K	BOLT M8 X 1.25 X 20 SET	01

20	71808169 K	PACKSET FL 169 TANDEM SEAL	01
21	72626691	STAGE 169-1710-TS-HC	01
22	71811169 K	OUTER STOPRING FL 169	01
23	71807169 K	SLIDER FL 169	01
24	71813169 K	LIFTRING FL 169x5	01

30	71808149 K	PACKSET FL 149/HP 150 TANDEM SEAL	01
31	72625691	STAGE 149-1710-TS-HC	01
32	71811149 K	OUTER STOPRING FL 149	01
33	71807149 K	SLIDER FL 149	01
34	71812149 K	LIFTRING FL 149/HP 150	01

40	71808129 K	PACKSET FL 129/HP 129 TANDEM SEAL	01
41	72624691	STAGE 129-1710-TS-HC	01
42	71811129 K	OUTER STOPRING FL 129/HP 129 HD	01
43	71807129 K	SLIDER FL 129/GF 129 (2 X 1/2)	01
44	71812129 K	LIFTRING FL 129/HP 129	01

### Complete seal kit:

Part no.	Description
71908651 K	Seal kit complete: consists of all packsets with packset grease, O-rings and pins (pos.102)

### Spare part list

Pos	Part no.	Description	Qty.
50	71808110 K	PACKSET FL 110/HP 110 TANDEM SEAL	01
51	72623691	STAGE 110-1710-TS-HC	01
52	71811110 K	OUTER STOPRING FL 110/HP 110 HD	01
53	71807110 K	SLIDER FL 110/GF 110 (2 X 1/2)	01
54	71812110 K	LIFTRING FL 110	01

101	72412703	PISTON S 091-1737-HC (SR=700)	01
102	71875012	PIN ROUND HEAD GROOVED 8x15 mm	02
103	71870115 K	O-RING PISTON TOP 091	01
104	71811091 K	OUTER STOPRING FL 091/HP 091 HD	01
105	71807091 K	SLIDER FL 091 (2 X 1/2)	01
106	71870215	O-RING PISTON BOTTOM 091	01
107	71822091	BOTTOM PLATE PISTON 091	01
108	01745012	CIRCLIP 82 DIN 472 (87.5x2.5)	01
110	71837101	PISTON EYE SPH. 091 FOR DC GREASER	01
111	01770085	SPHERICAL EYE D.50 DO	01
112	01770560	CIRCLIP 75 GE 50 DO DIN 472	01
113	01317659	GREASE NIPPLE 00 1/8" BSPOT	01
114	01317670	GREASER PROTECTION CAP	01
123	71838901	DUST COVER FES 169-5	01

### Notes:

The inner and outer stoprings are pre-mounted in the grooves on spare stages and pistons. Therefore, when ordering new tubes, it is not required to order stopring separately.