

HYVA CYLINDER



71507425

Front end cylinder with outer cover

type

FC 191-4-05460-000A-K0343-HC

tipping weight

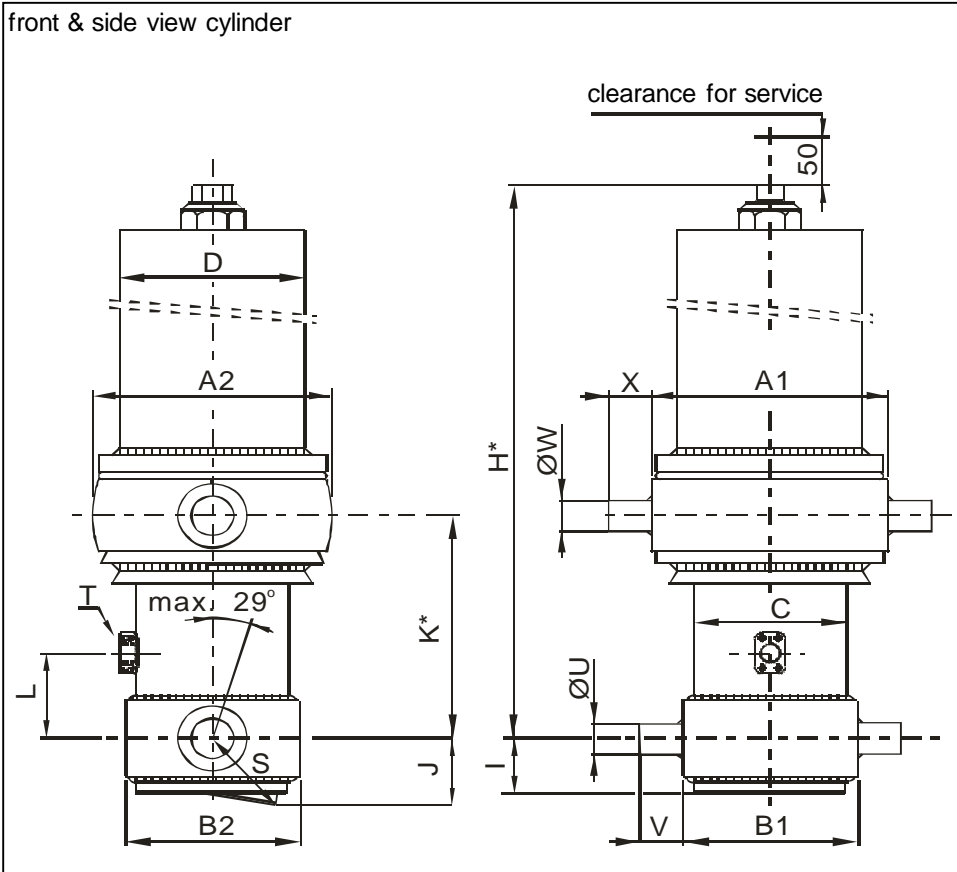
68-90 ton

page # 1 / 2

closed length (K)

338-373 mm

front & side view cylinder



	1	2	
A	360	362	mm
B	245	248	mm
C	214		mm
D	273		mm
E			mm
F			mm
G*			mm
H*	1712		mm
I	70		mm
J	116		mm
K*	343		mm
L	190		mm
M*			mm
N			mm
O			mm
P			mm
Q			mm
R			mm
S	139		mm
T	1" SAE		
U	60		mm
V	65		mm
W	60		mm
X	65		mm
Y			mm
Z			mm

*incl.20 [-5;+30] mm pull out on piston

specifications

weight cylinder only	381 kg
total volume	120 L
working volume	112 L
maximum pressure	190 bar
maximum pump flow	190 L/min
maximum cylinder angle to front	10 °
maximum thrust first stage**	40 ton

**when cyl. mounted at a large angle, thrust first stage may become too high: see Hyva Tipper Program

technical notes

This cylinder is a lifting device only and may not be used as structural member or be subject to side load. Working pressure depends on application; never exceed maximum pressure stated. Cylinder is painted black (RAL9005).

Max duration of extension 0.5 hours (excluded HC). See specification sheet CYL-0019 for mounting instructions, OIL-0011 for oil specifications and 015BRA01 for bracket specifications.

extension	1	2	3	4	5	6	7	8	9	
effective diameter [mm]	191	169	149	129						total
stroke [mm]	1350	1370	1370	1370						5460

tipping weight

tipping weight at maximum pressure of 190 bar and C is 229 mm

BL (body length); OH (rear overhang); X=Ycog (vert. pos. centre of gravity); Qo (pivot length); C (bracket length); At = stroke x 60 / Qo	BL	7300			6900			6500		
	OH	200	500	800	200	500	800	200	500	800
At	44	46	48	47	49	51	50	52	55	
Ycog	600	68	74	82	71	78	87	75	83	
900	73	80	90	77	85		82			
1200	78	87		83						

HYVA CYLINDER

71507425

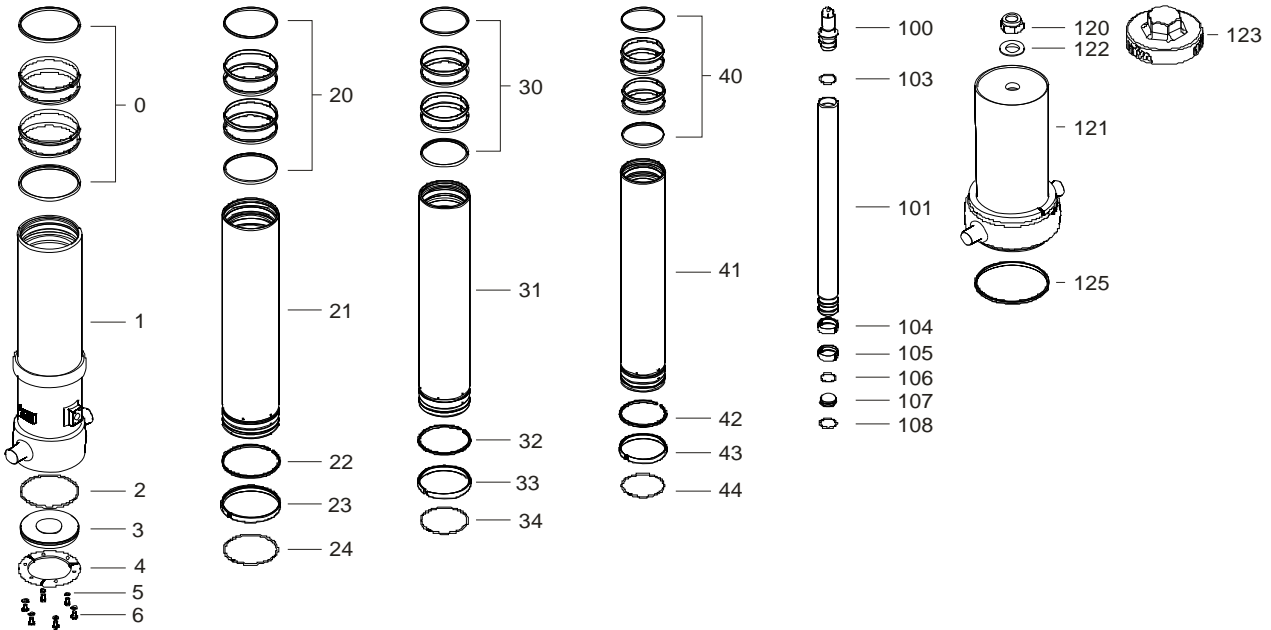


Front end cylinder with outer cover

type

FC 191-4-05460-000A-K0343-HC

page # 2 / 2



Spare part list

Pos	Part no.	Description	Qty.
0	71802214 K	PACKSET FL 214	01
1	72508580R1285	BASE 214-1637-4/4SAE-190-C273	01
2	71870045 K	SEAL BOTTOM PLATE 214	01
3	71821214 K	BOTTOM PLATE 214	01
4	71820214 K	LOCKING PLATE 214	03
5	01732523 K	SPRING WASHER M12 SET	01
6	01732020 K	BOLT M12 X 1.25 X 25 SET	01

20	71802191 K	PACKSET FL 191	01
21	72607581	STAGE 191-1590-HC	01
22	71811191 K	OUTER STOPRING FL 191	01
23	71807191 K	SLIDER FL 191	01
24	71813191 K	LIFTRING FL 191x5	01

30	71802169 K	PACKSET FL 169	01
31	72606581	STAGE 169-1590-HC	01
32	71811169 K	OUTER STOPRING FL 169	01
33	71807169 K	SLIDER FL 169	01
34	71813169 K	LIFTRING FL 169x5	01

Spare part list

Pos	Part no.	Description	Qty.
40	71802149 K	PACKSET FL 149/HP 150	01
41	72605581	STAGE 149-1590-HC	01
42	71811149 K	OUTER STOPRING FL 149	01
43	71807149 K	SLIDER FL 149	01
44	71812149 K	LIFTRING FL 149/HP 150	01

100	71831129	PISTON HEAD 129 MACHINED	01
101	72404581	PISTON S 129-1595-HC	01
103	71870125 K	O-RING PISTON TOP 129	01
104	71811129 K	OUTER STOPRING FL 129/HP 129 HD	01
105	71807129 K	SLIDER FL 129/GF 129 (2 X 1/2)	01
106	71870225	O-RING PISTON BOTTOM 129	01
107	71822129	BOTTOM PLATE PISTON 129	01
108	01745052	CIRCLIP 120 DIN 472 (127.0X4.0)	01

120	01702907	TOPNUT NYLOC M48x3 DIN 985 ZP	01
121	71707589	COVER 273-1385 PIN60	01
122	01702956	WASHER M48 DIN 125B ZP	01
123	01702971	DUST COVER FOR COVER 273 YELLOW	01
125	01791953	O-RING COVER D273	01

Seal kit complete:

Part no.	Description
71901740 K	Seal kit complete: consists of all packsets with packset grease and O-rings

Notes:

The inner and outer stoprings are pre-mounted in the grooves on spare stages and pistons. Therefore, when ordering new tubes, it is not required to order stopring separately.