

HYVA CYLINDER



F16457KA

Front end cylinder with outer cover

type

GFC 150-4-05740-000M-K0343

tipping weight

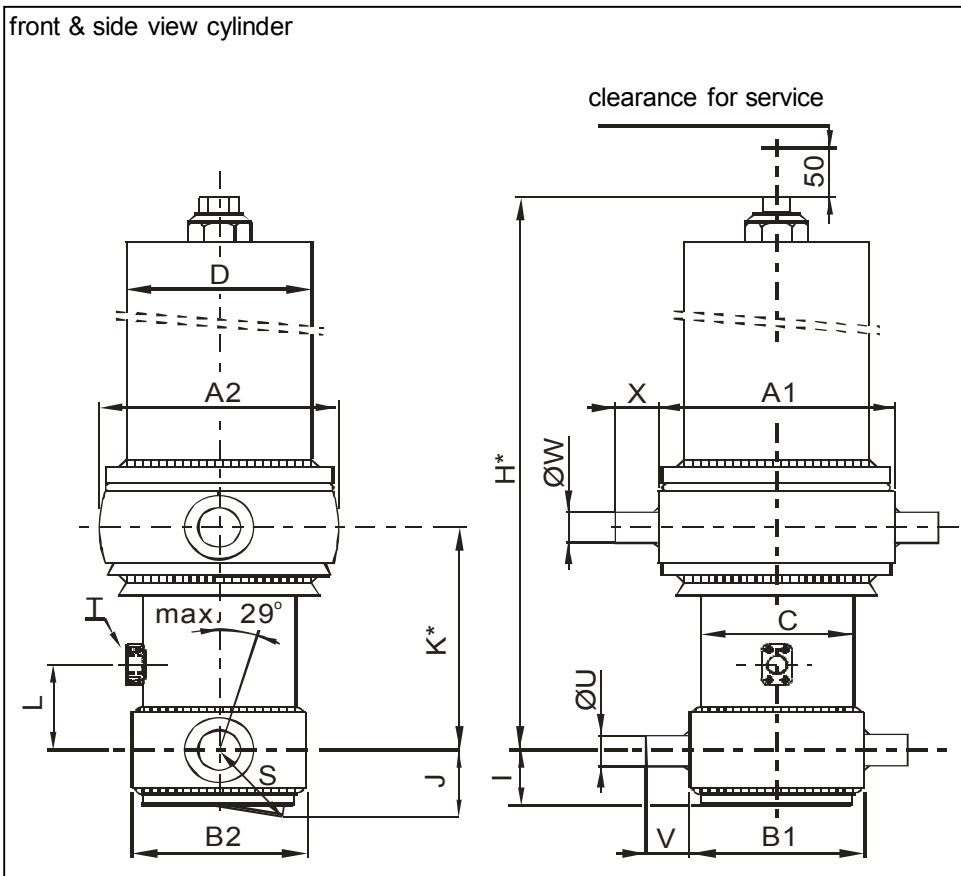
39-70 ton

page # 1 / 2

closed length (K)

338-373 mm

front & side view cylinder



	1	2	
A	340	329	mm
B	201	201	mm
C	172		mm
D	242		mm
E			mm
F			mm
G*			mm
H*	1908		mm
I	60		mm
J	97		mm
K*	343		mm
L	190		mm
M*			mm
N			mm
O			mm
P			mm
Q			mm
R			mm
S	114		mm
T	G1"		
U	60		mm
V	65		mm
W	60		mm
X	65		mm
Y			mm
Z			mm

*incl.20 [-5;+30] mm pull out on piston

specifications

weight cylinder only	331 kg
total volume	72 L
working volume	66 L
maximum pressure	250 bar
maximum pump flow	119 L/min
maximum cylinder angle to front	10 °
maximum thrust first stage**	30 ton

**when cyl. mounted at a large angle, thrust first stage may become too high: see Hyva Tipper Program

technical notes

This cylinder is a lifting device only and may not be used as structural member or be subject to side load. Working pressure depends on application; never exceed maximum pressure stated. Cylinder is painted black (RAL9005).

Max duration of extension 0.5 hours (excluded HC). See specification sheet CYL-0019 for mounting instructions, OIL-0011 for oil specifications and 015BRA01 for bracket specifications.

extension	1	2	3	4	5	6	7	8	9	
effective diameter [mm]	150	129	110	85						total
stroke [mm]	1420	1440	1440	1440						5740

tipping weight

tipping weight at maximum pressure of 250 bar and C is 229 mm

BL (body length); OH (rear overhang); X=Ycog (vert. pos. centre of gravity); Qo (pivot length); C (bracket length); At = stroke x 60 / Qo	BL	7600			7200			6800		
	OH	200	500	800	200	500	800	200	500	800
At	44	46	48	47	49	52	50	52	55	
Ycog	600	39	42	46	40	44	49	42	47	53
900	41	45	50	43	48	54	46	52	60	
1200	44	49	55	47	53	61	51	58	70	

HYVA CYLINDER



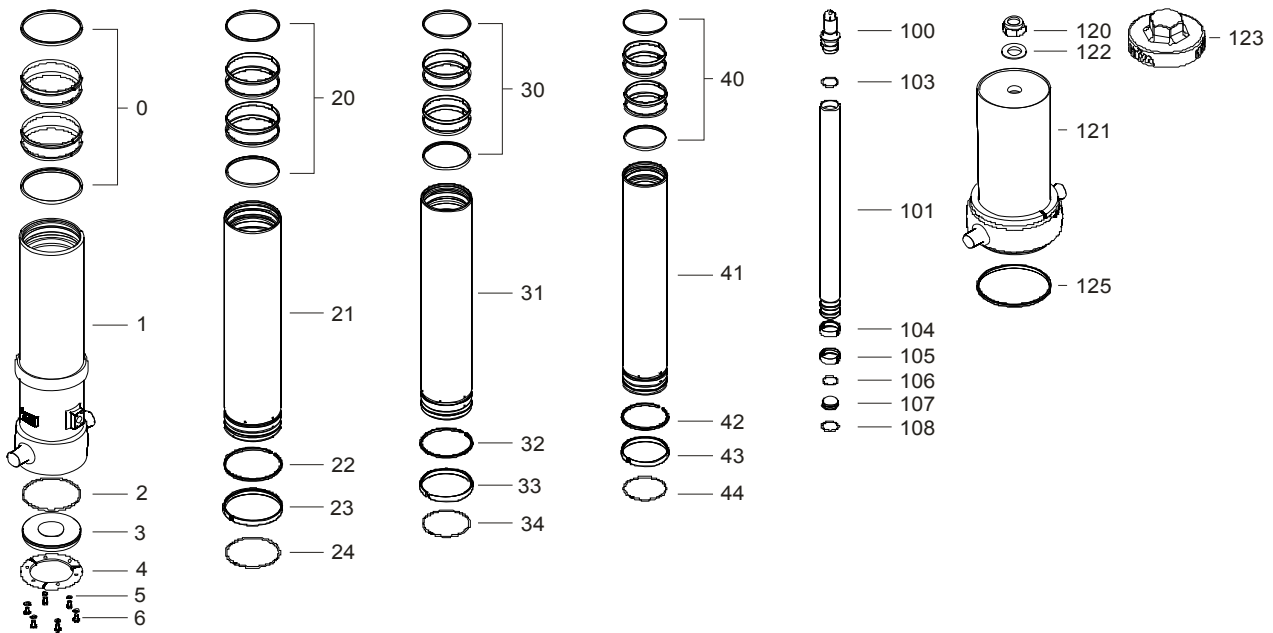
F16457KA

Front end cylinder with outer cover

type

GFC 150-4-05740-000M-K0343

page # 2 / 2



Spare part list

Pos	Part no.	Description	Qty.
0	75302172 K	PACKSET HP 172	01
1	74986720	BASE GF 172-1823-4/4BSP-190	01
2	75370172 K	SEAL BOTTOM PLATE 172	01
3	75320172 K	BOTTOM PLATE 172	01
4	75321172	LOCKING PLATE 172	03
5	01732559 K	SPRING WASHER M8 SET	01
6	01732055 K	BOLT M8 X 1.25 X 20 SET	01

20	71802149 K	PACKSET FL 149/HP 150	01
21	74995720	STAGE GF 150-1780	01
22	75311150 K	OUTER STOPRING HP 150	01
23	75314150 K	SLIDER GF 150	01
24	71812149 K	LIFTRING FL 149/HP 150	01

30	71802129 K	PACKSET FL 129/HP 129	01
31	74994720	STAGE GF 129-1780	01
32	71811129 K	OUTER STOPRING FL 129/HP 129 HD	01
33	71807129 K	SLIDER FL 129/GF 129 (2 X 1/2)	01
34	71812129 K	LIFTRING FL 129/HP 129	01

Spare part list

Pos	Part no.	Description	Qty.
40	75302110 K	PACKSET HP 110	01
41	74993720	STAGE GF 110-1780	01
42	71811110 K	OUTER STOPRING FL 110/HP 110 HD	01
43	71807110 K	SLIDER FL 110/GF 110 (2 X 1/2)	01
44	75310110 K	INNER STOPRING/LIFTRING HP 110	01

100	75330085	PISTON HEAD HP 085	01
101	74972721	PISTON GFS 085-1780-HC	01
103	75371085 K	O-RING PISTON TOP HP 085	01
104	75311085 K	OUTER STOPRING HP 085	01
105	75314085 K	SLIDER GF 085 (2 X 1/2)	01
106	75372085	O-RING PISTON BOTTOM HP 085	01
107	75322085	BOTTOM PLATE PISTON 085	01
108	01770560	CIRCLIP 75 GE 50 DO DIN 472	01

120	01702907	TOPNUT NYLOC M48x3 DIN 985 ZP	01
121	71706733	COVER 242-1585 PIN60	01
122	01702956	WASHER M48 DIN 125B ZP	01
123	75339242	DUST COVER FOR COVER 242 GEORG BLU	01
125	01791941	O-RING COVER D242	01

Seal kit complete:

Part no.	Description
75332540 K	Seal kit complete: consists of all packsets with packset grease and O-rings

Notes:

The inner and outer stoprings are pre-mounted in the grooves on spare stages and pistons. Therefore, when ordering new tubes, it is not required to order stopring separately.