

HYVA CYLINDER



715 39 111

Front end cylinder with eye

type

FE 214-6-10840-0011-K2162-HC

tipping weight

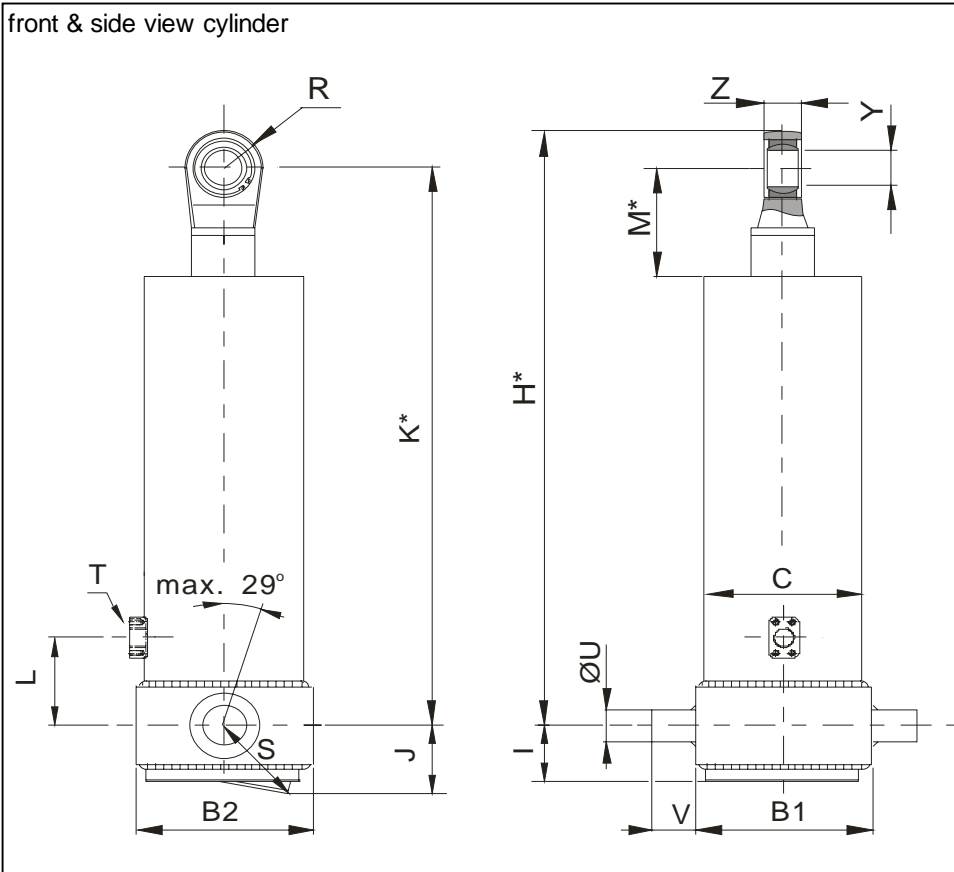
32-41 ton

page # 1 / 2

closed length (K)

2157-2192 mm

front & side view cylinder



	1	2	
A			mm
B	270	273	mm
C	238		mm
D			mm
E			mm
F			mm
G*			mm
H*	2224		mm
I	85		mm
J	135		mm
K*	2162		mm
L	290		mm
M*	100		mm
N			mm
O			mm
P			mm
Q			mm
R	53		mm
S	157		mm
T	1" SAE		
U	65		mm
V	65		mm
W			mm
X			mm
Y	50		mm
Z	42		mm

*incl.20 [-5;+30] mm pull out on piston

specifications

weight cylinder only	506 kg
total volume	246 L
working volume	230 L
maximum pressure	130 bar
maximum pump flow	190 L/min
maximum cylinder angle to front	30 °
maximum thrust first stage**	45 ton

**when cyl. mounted at a large angle, thrust first stage may become too high: see Hyva Tipper Program

technical notes

This cylinder is a lifting device only and may not be used as structural member or be subject to side load. Working pressure depends on application; never exceed maximum pressure stated. Cylinder is painted black (RAL9005). Max duration of extension 0.5 hours (excluded HC). See specification sheet CYL-0019 for mounting instructions, OIL-0011 for oil specifications and 015BRA01 for bracket specifications.

extension	1	2	3	4	5	6	7	8	9	
effective diameter [mm]	214	191	169	149	129	110				total
stroke [mm]	1790	1810	1810	1810	1810	1810				10840

tipping weight

tipping weight at maximum pressure of 130 bar and C is 158 mm

	14300			13800			13300		
	BL	OH	At	BL	OH	At	BL	OH	At
BL (body length); OH (rear overhang); X=Ycog (vert. pos. centre of gravity); Qo (pivot length); C (bracket length); At = stroke x 60 / Qo									
	200	500	800	200	500	800	200	500	800
	45	46	47	47	48	pistons.	49	50	52
Ycog									
600	32		35	33	34	36	34	35	37
900	33	35	36	34	36	37	35	37	39
1200	35	36	38	36	37	39	37	39	41

HYVA CYLINDER



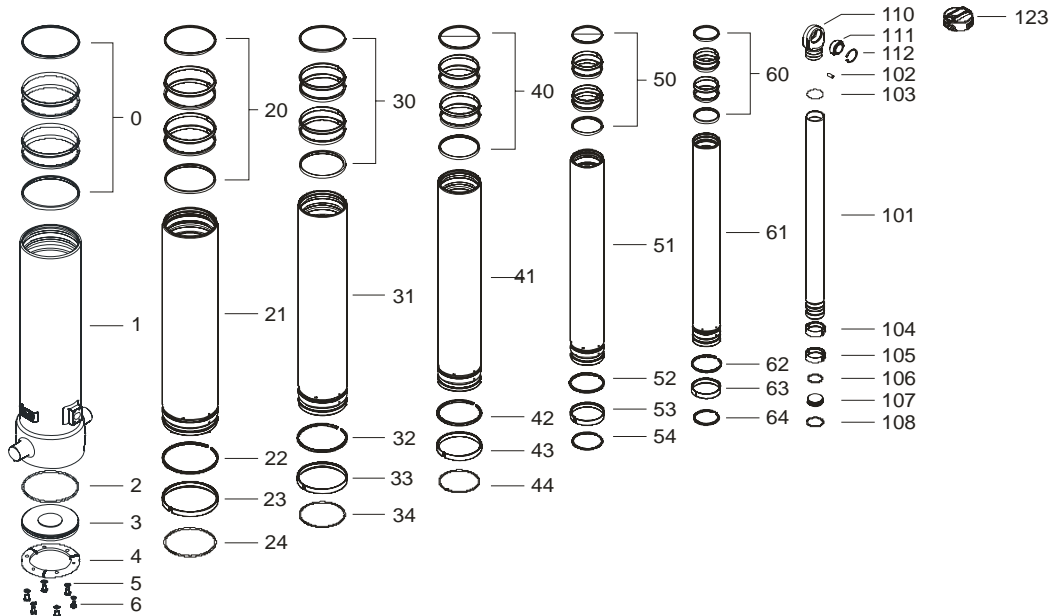
715 39 111

Front end cylinder with eye

type

FE 214-6-10840-001I-K2162-HC

page # 2 / 2



Spare part list

Pos	Part no.	Description	Qty.
0	71802238 K	PACKSET FL 238	01
1	72509872	BASE 238-2137-4/4SAE-290	01
2	71870050 K	SEAL BOTTOM PLATE 238	01
3	71821238	BOTTOM PLATE 238	01
4	71820238	LOCKING PLATE 238	03
5	01732523 K	SPRING WASHER M12 SET	01
6	01732020 K	BOLT M12 X 1.25 X 25 SET	01

20	71802214 K	PACKSET FL 214	01
21	72608871	STAGE 214-2090-HC	01
22	71811214 K	OUTER STOPRING FL 214	01
23	71807214 K	SLIDER FL 214	01
24	71813214 K	LIFTRING FL 214x6	01

30	71802191 K	PACKSET FL 191	01
31	72607871	STAGE 191-2090-HC	01
32	71811191 K	OUTER STOPRING FL 191	01
33	71807191 K	SLIDER FL 191	01
34	71813191 K	LIFTRING FL 191x5	01

40	71802169 K	PACKSET FL 169	01
41	72606871	STAGE 169-2090-HC	01
42	71811169 K	OUTER STOPRING FL 169	01
43	71807169 K	SLIDER FL 169	01
44	71813169 K	LIFTRING FL 169x5	01

Spare part list

Pos	Part no.	Description	Qty.
50	71802149 K	PACKSET FL 149/HP 150	01
51	72605871	STAGE 149-2090-HC	01
52	71811149 K	OUTER STOPRING FL 149	01
53	71807149 K	SLIDER FL 149	01
54	71812149 K	LIFTRING FL 149/HP 150	01

60	71802129 K	PACKSET FL 129/HP 129	01
61	72604871	STAGE 129-2090-HC	01
62	71811129 K	OUTER STOPRING FL 129/HP 129 HD	01
63	71807129 K	SLIDER FL 129/GF 129 (2 X 1/2)	01
64	71812129 K	LIFTRING FL 129/HP 129	01

101	72403871	PISTON S 110-2095-HC	01
102	71875012	PIN ROUND HEAD GROOVED 8x15 mm	02
103	71870120 K	O-RING PISTON TOP 110	01
104	71811110 K	OUTER STOPRING FL 110/HP 110 HD	01
105	71807110 K	SLIDER FL 110/GF 110 (2 X 1/2)	01
106	71870220	O-RING PISTON BOTTOM 110	01
107	71822110	BOTTOM PLATE PISTON 110	01
108	01745050	CIRCLIP 100 DIN 472 (105.5X3.0)	01
110	71835110	PISTON EYE SPH. 110 MACHINED+SPH.EY	01
111	71875450	SPHERICAL EYE D.50 MAINT. FREE	01
112	01770560	CIRCLIP GE 50 DO	01
123	71838975	DUST COVER FE 214-6/7 YELLOW	01

Seal kit complete:

Part no.	Description
71901860 K	Seal kit complete: consists of all packsets with packset grease, O-rings and Pin (pos.102)

Notes:

The inner and outer stoprings are pre-mounted in the grooves on spare stages and pistons. Therefore, when ordering new tubes, it is not required to order stopring separately.