

HYVA CYLINDER



715 37 679

Front end cylinder with eye

type

FE 191-5-07430-011C-K1797-HC

tipping weight

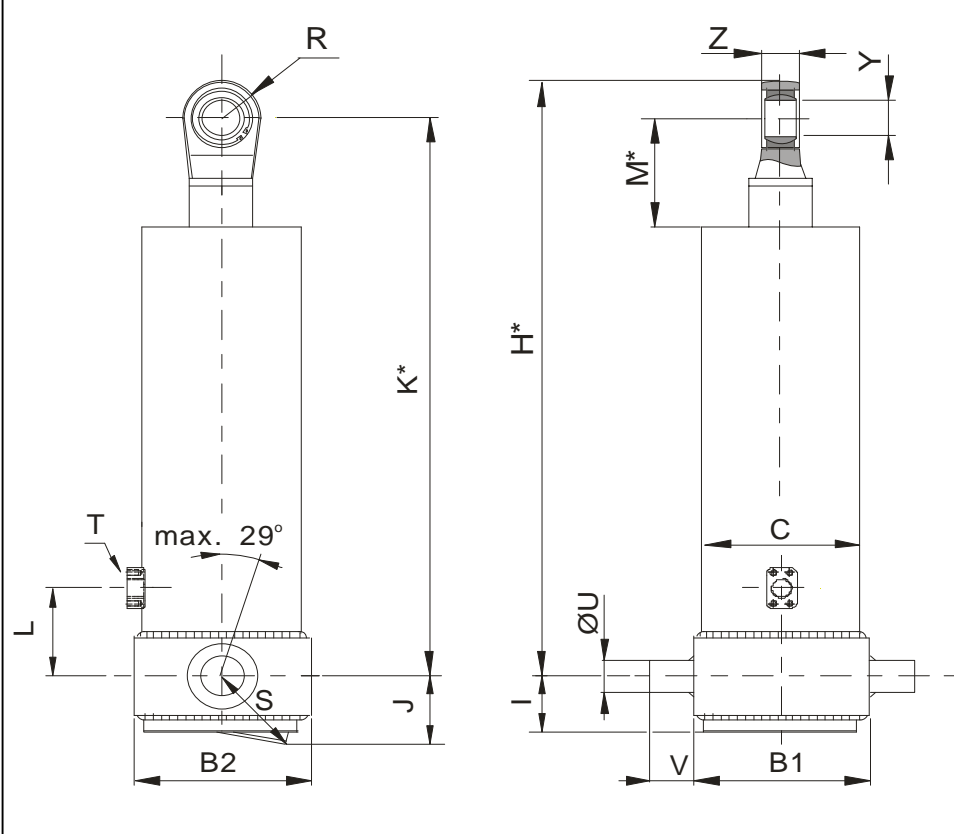
38-53 ton

page # 1 / 2

closed length (K)

1792-1827 mm

front & side view cylinder



	1	2	
A			mm
B	245	248	mm
C	214		mm
D			mm
E			mm
F			mm
G			mm
G*			mm
H*	1850		mm
I	70		mm
J	116		mm
K*	1797		mm
L	700		mm
M*	100		mm
N			mm
O			mm
P			mm
Q			mm
R	53		mm
S	139		mm
T	1" SAE		
U	60		mm
V	65		mm
W			mm
X			mm
Y	50		mm
Z	42		mm

*incl.20 [-5;+30] mm pull out on piston

specifications

weight cylinder only	329 kg
total volume	146 L
working volume	136 L
maximum pressure	150 bar
maximum pump flow	190 L/min
maximum cylinder angle to front	30 °
maximum thrust first stage**	40 ton

**when cyl. mounted at a large angle, thrust first stage may become too high: see Hyva Tipper Program

technical notes

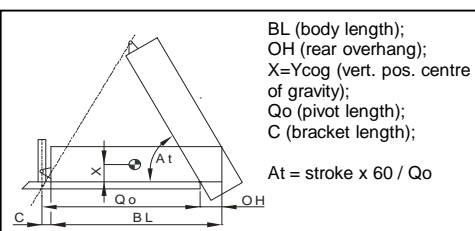
This cylinder is a lifting device only and may not be used as structural member and may not be subjected to any side load. Working pressure depends on application; it may never exceed the maximum pressure stated. Cylinder is painted black with high layer thickness (RAL9005). Max duration of extension is 0,5 hours (excluded HC). See specification sheet CYL-0019 for mounting instructions, OIL-0011 for oil specifications and 015-BRA01 for bracket specifications.

extension	1	2	3	4	5	6	7	8	9	
effective diameter [mm]	191	169	149	129	110					total
stroke [mm]	1470	1490	1490	1490	1490					7430

tipping weight

tipping weight at maximum pressure of 150 bar and C is 158 mm

	BL	9800			9550			9300		
		OH	200	500	800	200	500	800	200	500
At		45	47	49	47	48	50	48	50	52
Ycog										
600		38	40	43	39	41	44	39	42	45
900		40	43	46	41	44	47	42	45	49
1200		42	45	49	43	47	51	45	48	53



Subject to change without notice.

DO-E 71537679 / 13-01-29 / RV AA

HYVA CYLINDER



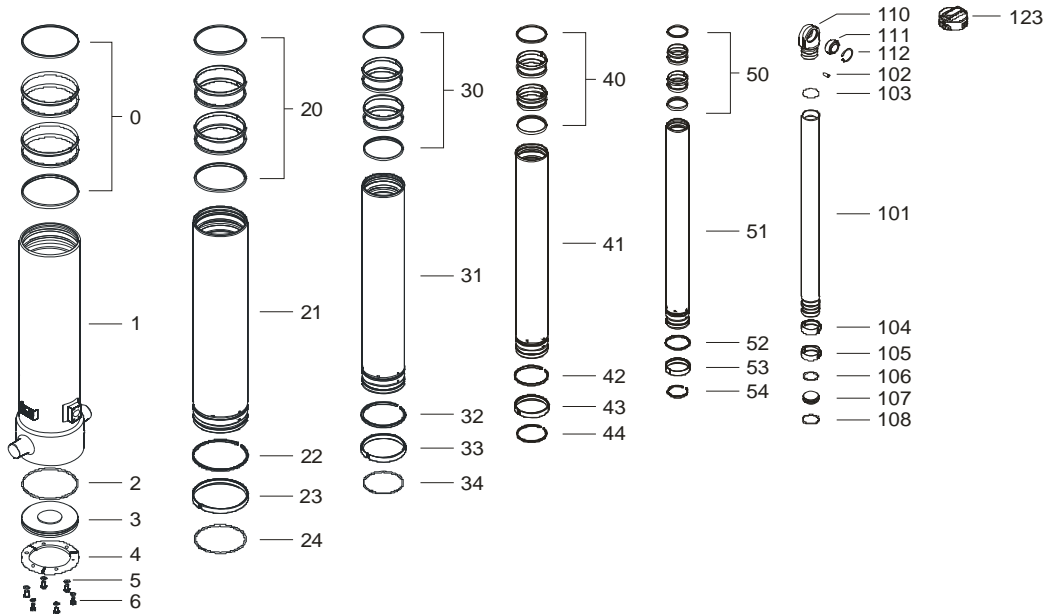
715 37 679

Front end cylinder with eye

type

FE 191-5-07430-011C-K1797-HC

page # 2 / 2



Spare part list

Pos	Part no.	Description	Qty.
0	71802214 K	PACKSET FL 214	01
1	72518704	BASE 214-1757-4/4SAE-700	01
2	71870045 K	SEAL BOTTOM PLATE 214	01
3	71821214	BOTTOM PLATE 214	01
4	71820214	LOCKING PLATE 214	03
5	01732523 K	SPRING WASHER M12 SET	01
6	01732020 K	BOLT M12 X 1.25 X 25 SET	01

20	71802191 K	PACKSET FL 191	01
21	72617691	STAGE 191-1710-HC	01
22	71811191 K	OUTER STOPRING FL 191	01
23	71807191 K	SLIDER FL 191	01
24	71813191 K	LIFTRING FL 191x5	01

30	71802169 K	PACKSET FL 169	01
31	72616691	STAGE 169-1710-HC	01
32	71811169 K	OUTER STOPRING FL 169	01
33	71807169 K	SLIDER FL 169	01
34	71813169 K	LIFTRING FL 169x5	01

40	71802149 K	PACKSET FL 149/HP 150	01
41	72615691	STAGE 149-1710-HC	01
42	71811149 K	OUTER STOPRING FL 149	01
43	71807149 K	SLIDER FL 149	01
44	71812149 K	LIFTRING FL 149/HP 150	01

Seal kit complete:

Part no.	Description
71901750 K	Seal kit complete: consists of all packsets with packset grease, O-rings and Pin (pos.102)

Spare part list

Pos	Part no.	Description	Qty.
50	71802129 K	PACKSET FL 129/HP 129	01
51	72614691	STAGE 129-1710-HC	01
52	71811129 K	OUTER STOPRING FL 129/HP 129 HD	01
53	71807129 K	SLIDER FL 129/GF 129 (2 X 1/2)	01
54	71812129 K	LIFTRING FL 129/HP 129	01

101	72413701	PISTON S 110-1715-HC	01
102	71875012	PIN ROUND HEAD GROOVED 8x15 mm	02
103	71870120 K	O-RING PISTON TOP 110	01
104	71811110 K	OUTER STOPRING FL 110/HP 110 HD	01
105	71807110 K	SLIDER FL 110/GF 110 (2 X 1/2)	01
106	71870220	O-RING PISTON BOTTOM 110	01
107	71822110	BOTTOM PLATE PISTON 110	01
108	01745050	CIRCLIP 100 DIN 472 (105.5X3.0)	01
110	71835110	PISTON EYE SPH. 110 MACHINED+SPH.EY	01
111	71875450	SPHERICAL EYE D.50 MAINT. FREE	01
112	01770560	CIRCLIP GE 50 DO	01
123	71838965	DUST COVER FE 191-5/6 YELLOW	01

Notes:

The inner and outer stoprings are pre-mounted in the grooves on spare stages and pistons. Therefore, when ordering new tubes, it is not required to order stopring separately.