

HYVA CYLINDER



71508780P02

Front end cylinder with outer cover

type

FC 214-6-08200-004B-K1050

tipping weight

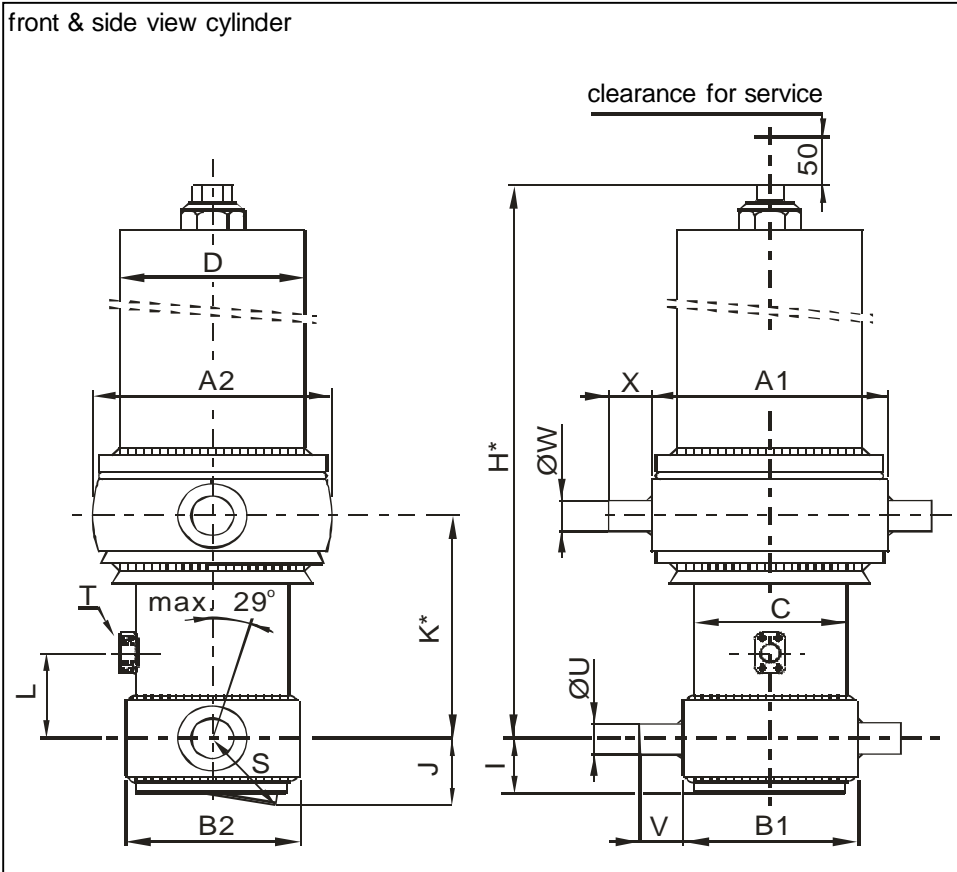
44-62 ton

page # 1 / 2

closed length (K)

1045-1080 mm

front & side view cylinder



	1	2	
A	360	362	mm
B	270	273	mm
C	238		mm
D	273		mm
E			mm
F			mm
G*			mm
H*	1697		mm
I	85		mm
J	135		mm
K*	1050		mm
L	190		mm
M*			mm
N			mm
O			mm
P			mm
Q			mm
R			mm
S	157		mm
T	1" SAE		
U	65		mm
V	65		mm
W	60		mm
X	65		mm
Y			mm
Z			mm

*incl.20 [-5;+30] mm pull out on piston

specifications

weight cylinder only	464 kg
total volume	186 L
working volume	174 L
maximum pressure	170 bar
maximum pump flow	190 L/min
maximum cylinder angle to front	20 °
maximum thrust first stage**	45 ton

**when cyl. mounted at a large angle, thrust first stage may become too high: see Hyva Tipper Program

technical notes

This cylinder is a lifting device only and may not be used as structural member or be subject to side load. Working pressure depends on application; never exceed maximum pressure. Cylinder painted Red (colour RAL3020). Max duration of extension 2 hours (excluded HC). See mounting instruction CYL-0019. See oil specification sheet OIL-0002. See bracket specification sheet 015BRA01.

extension	1	2	3	4	5	6	7	8	9	
effective diameter [mm]	214	191	169	149	129	110				total
stroke [mm]	1350	1370	1370	1370	1370	1370				8200

tipping weight

tipping weight at maximum pressure of 170 bar and C is 229 mm

<p>BL (body length); OH (rear overhang); X=Ycog (vert. pos. centre of gravity); Qo (pivot length); C (bracket length); At = stroke x 60 / Qo</p>	BL	10800						10450			10100		
	OH	200	500	800	200	500	800	200	500	800			
	At	45	46	48	47	48	50	48	50	52			
	Ycog	600	44	46	49	45	48	51	46	49	52		
		900	46	49	52	47	50	54	49	52	57		
	1200	49	52	56	50	54	58	52	56	62			

Subject to change without notice.

DO-E 71508780P02 / 11-05-20 / RV AA

HYVA CYLINDER



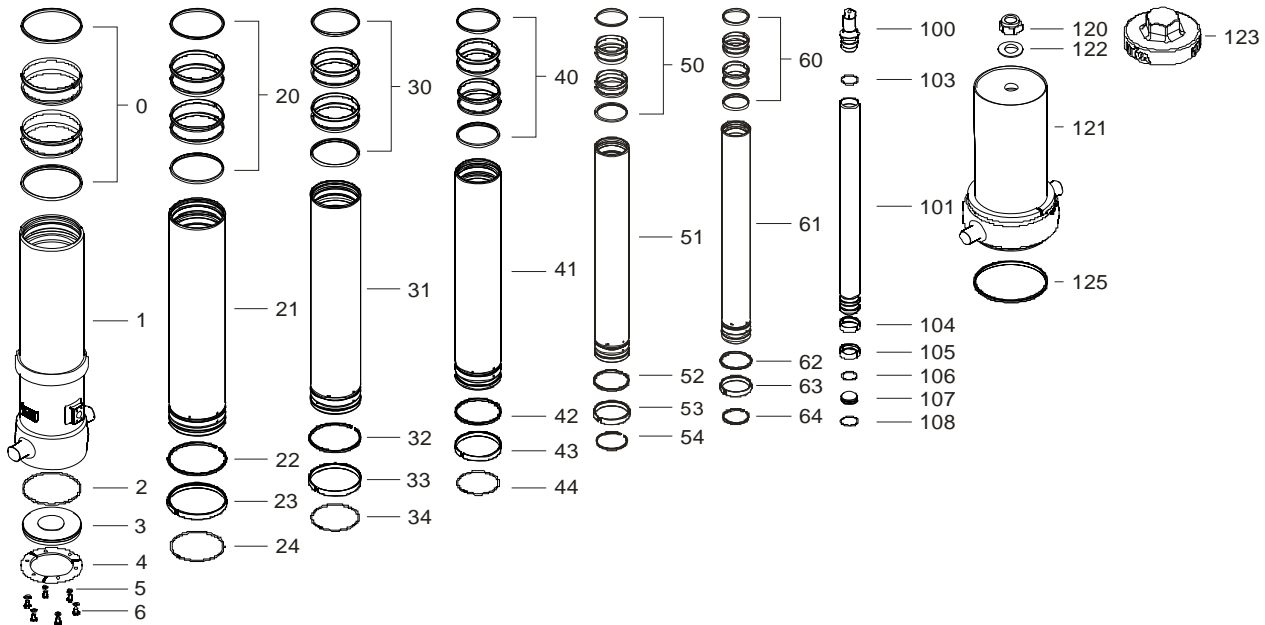
71508780P02

Front end cylinder with outer cover

type

FC 214-6-08200-004B-K1050

page # 2 / 2



Spare part list

Pos	Part no.	Description	Qty.
0	71802238 K	PACKSET FL 238	01
1	72509580R0565	BASE 238-1637-4/4SAE-190-C273	01
2	71870050 K	SEAL BOTTOM PLATE 238	01
3	71821238	BOTTOM PLATE 238	01
4	71820238	LOCKING PLATE 238	03
5	01732523 K	SPRING WASHER M12 SET	01
6	01732020 K	BOLT M12 X 1.25 X 25 SET	01
20	71802214 K	PACKSET FL 214	01
21	72608580	STAGE 214-1590	01
22	71811214 K	OUTER STOPRING FL 214	01
23	71807214 K	SLIDER FL 214	01
24	71813214 K	LIFTRING FL 214x6	01
30	71802191 K	PACKSET FL 191	01
31	72607580	STAGE 191-1590	01
32	71811191 K	OUTER STOPRING FL 191	01
33	71807191 K	SLIDER FL 191	01
34	71813191 K	LIFTRING FL 191x5	01
40	71802169 K	PACKSET FL 169	01
41	72606580	STAGE 169-1590	01
42	71811169 K	OUTER STOPRING FL 169	01
43	71807169 K	SLIDER FL 169	01
44	71813169 K	LIFTRING FL 169x5	01

Spare part list

Pos	Part no.	Description	Qty.
50	71802149 K	PACKSET FL 149/HP 150	01
51	72605580	STAGE 149-1590	01
52	71811149 K	OUTER STOPRING FL 149	01
53	71807149 K	SLIDER FL 149	01
54	71812149 K	LIFTRING FL 149/HP 150	01
60	71802129 K	PACKSET FL 129/HP 129	01
61	72604580	STAGE 129-1590	01
62		NOT APPLICABLE	
63	71807129 K	SLIDER FL 129/GF 129 (2 X 1/2)	02
64	71812129 K	LIFTRING FL 129/HP 129	01
100	71831110	PISTON HEAD 110 MACHINED	01
101	72403581	PISTON S 110-1595-HC	01
103	71870120 K	O-RING PISTON TOP 110	01
104	71807110 K	SLIDER FL 110/GF 110 (2 X 1/2)	01
105	71807110 K	SLIDER FL 110/GF 110 (2 X 1/2)	01
106	71870220	O-RING PISTON BOTTOM 110	01
107	71822110	BOTTOM PLATE PISTON 110	01
108	71814110	SNAPRING FOR PISTON 110x4	01
120	01702907	TOPNUT NYLOC M48x3 DIN 985 ZP	01
121	71707166P02	COVER 273-0665 PIN60 COLOUR	01
122	01702956	WASHER M48 DIN 125B ZP	01
123	01702971	DUST COVER FOR COVER 273 YELLOW	01
125	01791953	O-RING COVER D273	01

Seal kit complete:

Part no.	Description
71901860 K	Seal kit complete: consists of all packsets with packset grease and O-rings