

FLOW CONTROL VALVE



FLOW CONTROL VALVE WITH CHECK

Hyva

tipping valve type:

flow control valve VRF 3/8"

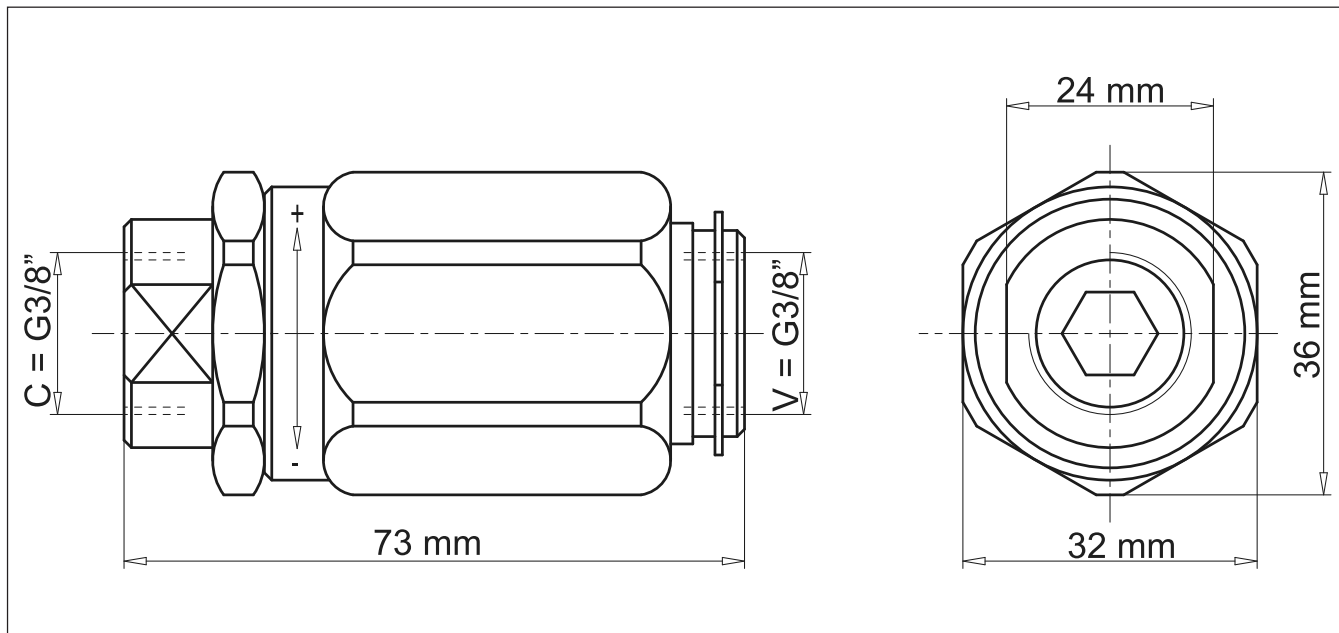
working pressure:

max. 300 bar

page # 1 / 1

part number valve:

147 00 487



General information

USE AND OPERATION:

This valve is used to adjust flow speed of actuators in one direction; flow is free in the reverse one. As pressure compensation is not provided, flow adjustment depends on pressure and oil viscosity.

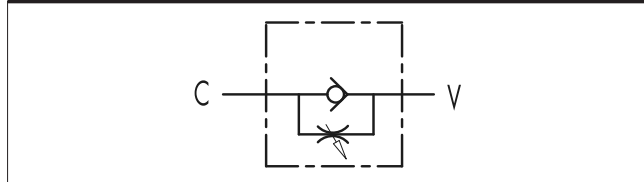
APPLICATIONS:

Connect V to the pressure flow and C to the actuator to set. The flow is adjusted from C to V and free in the reverse direction. When used on actuator with double pilot check valve, VRF has to be mounted between the actuator and the double pilot check valve. Flow adjustment is made by rotating the coupling: by clockwise rotation flow increases and vice versa. Once the flow has been set, lock the nut in order to keep the desired settings even in case of vibrations.

Specifications

Type	: Barrel flow valve
Maximum flow	: 45 l/m
Maximum working pressure	: 300 bar
Cracking pressure	: 0,5 bar
Hydraulic connections	: G3/8"
Body	: Zinc-plated steel
Internal parts	: Hardened and ground steel
Seal	: BUNA N standard
Weight	: 0,330 kg

Hydraulic symbol



Pressure drop curve

Viscosity: 30 cST at 50°C

