

HYVA PISTON PUMPS



BENT AXIS TYPE

Hyva

piston pump type :

piston pump 110L - HP - L - 4H

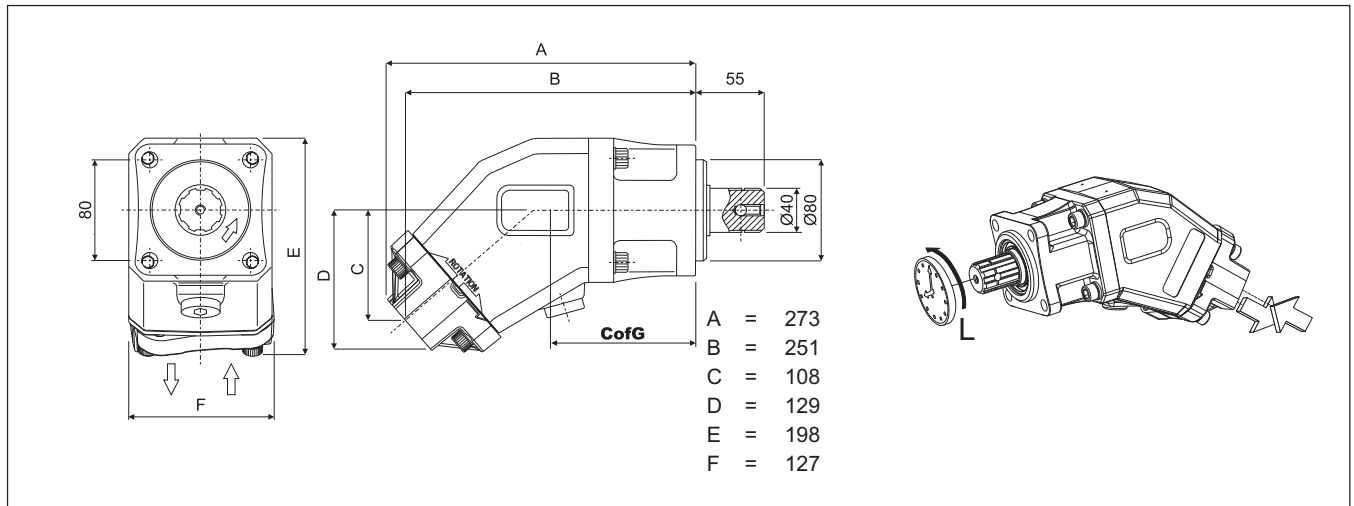
part number :

145 64 705

page # 1 / 2

rotation :

anti clock wise seen from front side of pump

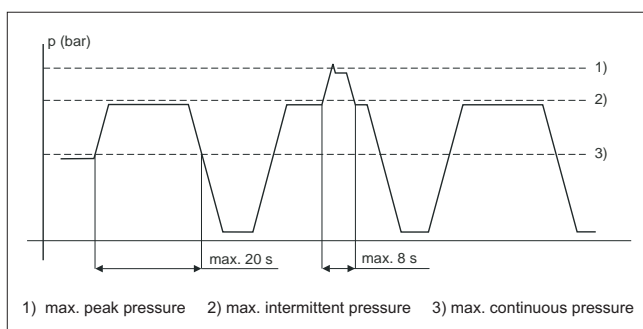


specifications

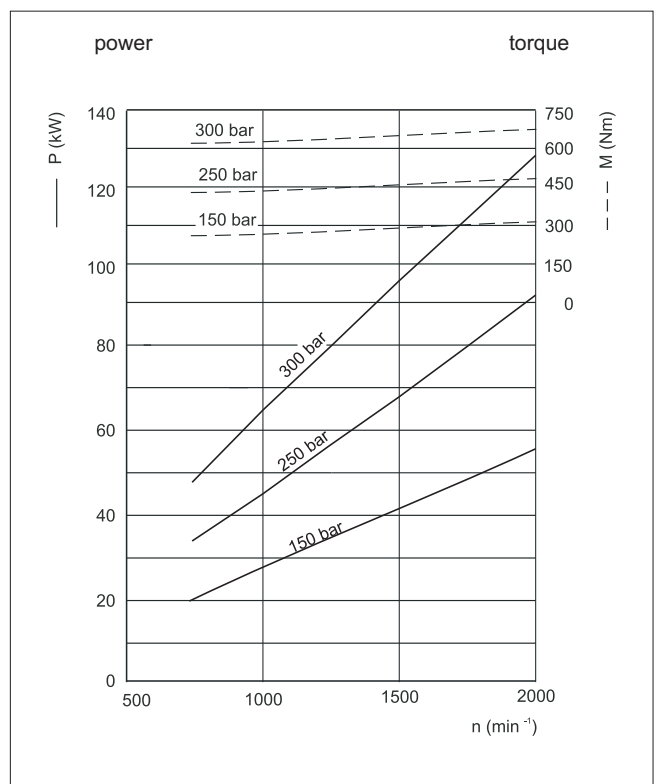
displacement per revolution	:	110	cm ³
maximum peak pressure	:	350	bar
maximum intermittent pressure	:	320	bar
maximum continuous pressure	:	300	bar
maximum self priming speed	:	1300	min ⁻¹
max. speed at intermittent press.	:	2000	min ⁻¹
min. speed at intermittent press.	:	350	min ⁻¹
oil temperature range	:	-25 ⇔ 80	°C
inlet pressure range (suction side)	:	0,85 ⇔ 2	bar (abs)
recommended oil viscosity range	:	10 ⇔ 400	mm ² /s (cSt)
maximum starting viscosity	:	1000	mm ² /s (cSt)
filtration :			
- working pressure < 200 bar	:	25	µm
- working pressure > 200 bar	:	10	µm
connection :			
- inlet - straight internal thread	:	1,25	" B.S.P.
- outlet - straight internal thread	:	1	" B.S.P.
minimum suction hose bore diameter	:	2	inch
shaft DIN 5462 spline	:	8*32*36	mm
mass	:	15,5 +/- 0,5	kg
centre of gravity distance (CofG)	:	131,9	mm
noise level at 900 min ⁻¹ and 100 bar	:	66,9	dB(A)
noise level at 1500 min ⁻¹ and 100 bar	:	69,7	dB(A)

working speed depends on hose size

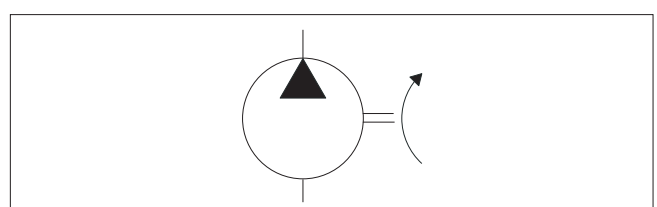
pressure definition



power and torque



hydraulic pump symbol



subject to change without notice

DO-E 14564705 / 12 10 23 / RV AH

HYVA PISTON PUMPS

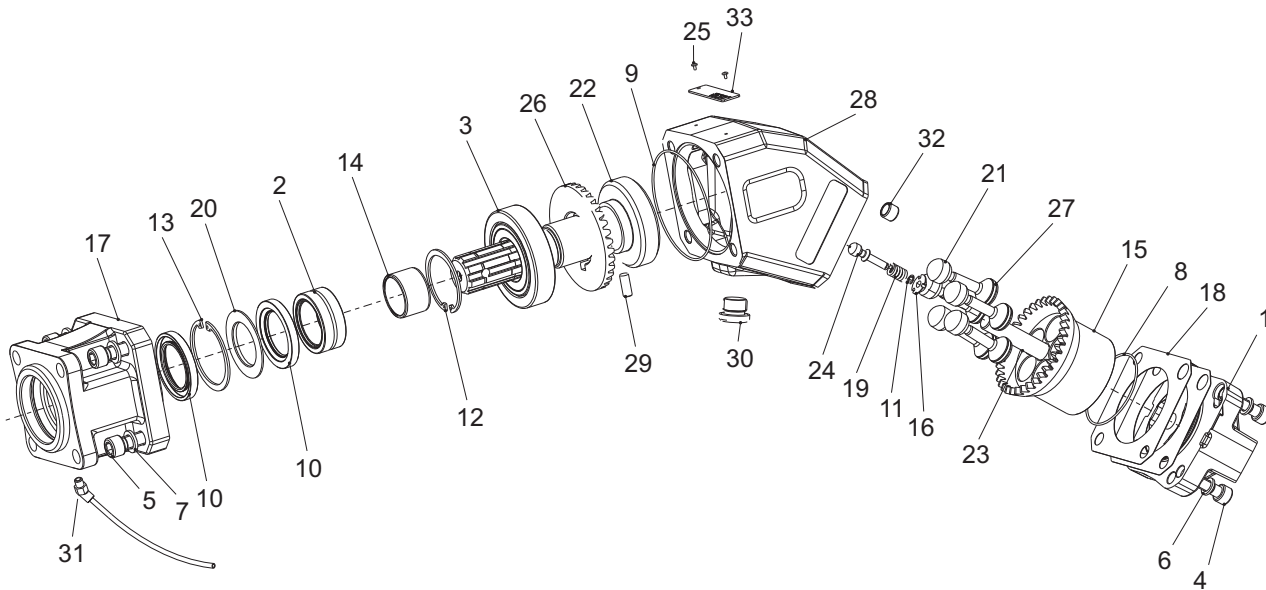


BENT AXIS TYPE

Hyva piston pump type : piston pump 110L - HP - L - 4H
 part number : 145 64 705
 rotation : anti clock wise seen from front side of pump

page # 2 / 2

drawing for part number reference only



Check if you have a rear cover (pos. 1) with 4 or 8 mounting holes.
 If you need parts for a pump with a 4 holes cover contact Hyva or your local agent.

spare part list piston pump 145 64 705

pos.	code no.	description	qty.
1		rear cover	1
2		bearing	1
3		conic roller bearing	1
4	023 59 215	screw	4
5		screw	4
6		washer	4
7		washer	4
8		OR seal	1
9		OR seal	1
10		Viton seal	2
11	024 700 60	circlip	1
12		circlip	1
13		circlip	1
14	0240 700 45	ring	1
15		cylinder block	1
16		centering lock	1
17	024 70 110	flange	1
18		seal side cover	2
19		centering spring	1
20		keep plate	1
21		piston	5
22		shaft	1
23	024 70 530	pin	1
24		dowel pin	1
25		rivet	2

spare part list piston pump 145 64 705

pos.	code no.	description	qty.
26		gear	1
27	024 70 665	segment	5
28	024 70 695	pump body	1
29		dowel pin	1
30		steel plug	1
31	024 70 190	leak indicator kit pump	1
32	024 93 245	steel bush	1
33		name plate	1
	024 70 042	seal kit (comprises 8, 9, 10,18 & 20)	1

general information and mounting possibilities.

The mentioned data on page 1 is for mineral based oil.
 For other fluids, please contact our engineering dept.

The filtration as mentioned is for tippers only. For different applications we advise filtration according ISO 4406 class 17/14.

To avoid cavitation, the suction hose must be kept as short and straight as possible, and the minimum oil level in the oil tank must be above the inlet of the pump.

The direction of rotation of this pump can be changed by a skilled (hydraulic) engineer.
 For information please contact our engineering dept.