

HYVA CYLINDER

714 07 475



type: **UMB 191-7-1660-K263-60-3/4"-HC**

tipping weight: **12-23 ton**

page # 1 / 2

Stage diameters	front view cylinder		A	245
191			ØC	215
169			G ¹	468
149			I	205
129			K ¹	263
110			M ¹	99
91			ØP	100
72			ØQ	65
		S	231	
		ØW	60	
		X	45	

¹including 20 mm pull-out [tol. -5; +30 mm]

²cylinder is delivered including oil inlet swivel adapter and cup

specifications

total stroke ¹	1660 mm
dry weight cylinder only	97 kg
total volume	26.0 L
working volume	24.1 L
maximum pressure	220 bar
maximum pump flow	61 l/min
maximum allowable thrust first stage ³	20.0 ton
oil inlet	3/4" BSP

technical notes

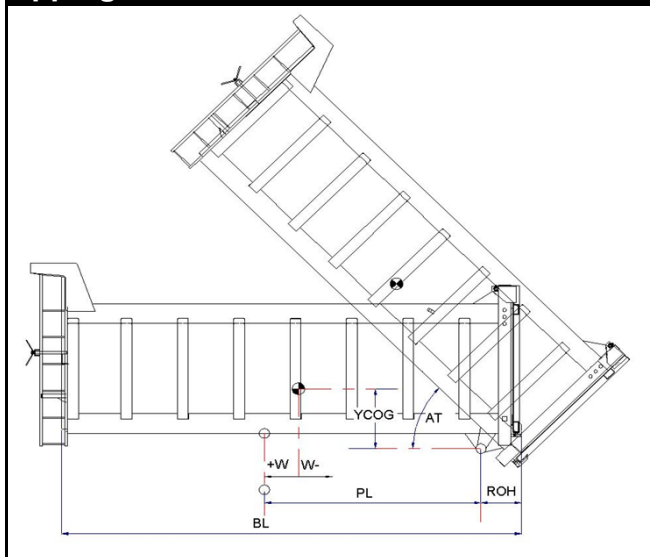
This cylinder is a lifting device only and may not be used as a structural member or be subjected to side load. Sideload and/or poor alignment might result in cylinder leakage. Hyva therefore strongly recommends the use of a cradle, even in instances where the cylinder only tips to the rear or to the side. The cylinder is painted black RAL9005.

For suitable hydraulic oils, please refer to data sheet OIL-0011. For details of available brackets and cradles, please refer data sheet 015BRA06.

Detailed calculations can be made using the HYVA Tipper Program, freely available from tipper.hyva.com.

³The cylinder thrust on the first stage (from the HYVA Tipper Program) must not exceed the maximum allowable (see specifications above).

tipping view



tipping weight

PL	2170			mm	1920		
YCOG	700			mm	700		
ROH	700			mm	700		
BL	6380	5740	5220	mm	5820	5240	4760
CYL w.r.t. COG (W)	-320	0	260	mm	-290	0	240
	Tipping weight for full stroke of 46°				Tipping weight for full stroke of 52°		
Tipping weight	12	15	18	ton	14	17	21
	Tipping weight for second last stage, up to 39°				Tipping weight for 2nd last stage, up to 45°		
Tipping weight	17	20	23	ton	17	20	23

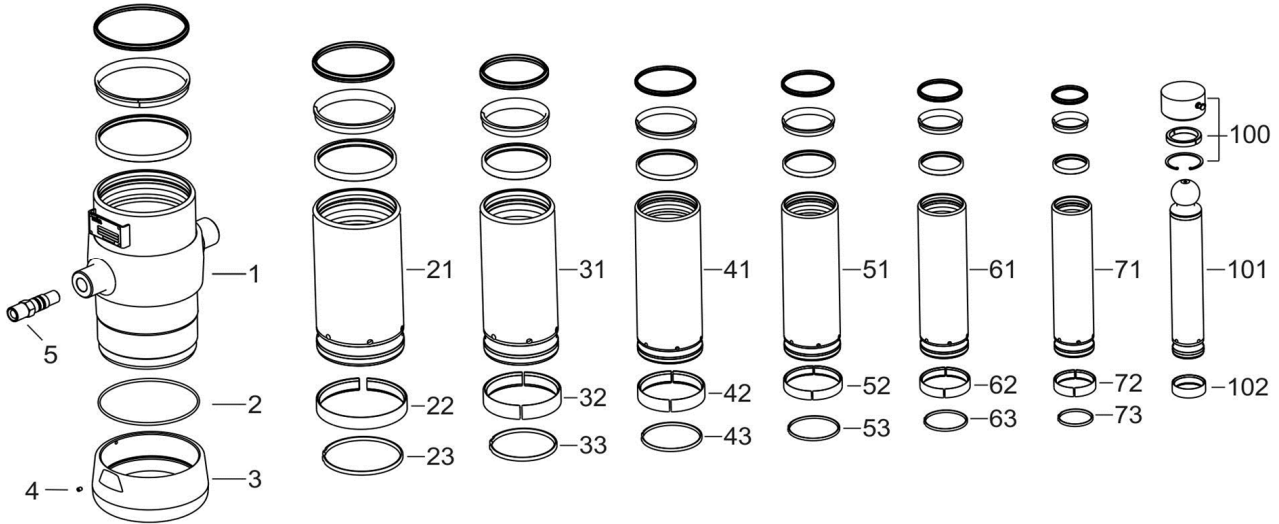
HYVA CYLINDER

714 07 475

type

UMB 191-7-1660-K263-60-3/4"-HC

page # 2 / 2



Spare part list			
Pos	Part no.	Description	Qty.
1	73508150	BASE 214-0338-N0164	1
2	01226840	O-RING 208 X 4 70 SHORE	1
3	73101060	THREADED BOTTOM UM 214	1
4	01792571	LOCKING SCREW M6X12 INT. HEX. DIN 916	1
5	73103002	OIL INLET ADAPTOR UM 3/4"OT+O-RING	1
21	73607151	STAGE 191-0338-HC	1
22	71807191 K	SLIDER FL 191	1
23	71813191 K	LIFTRING FL 191x5	1
31	73606151	STAGE 169-0338-HC	1
32	71807169 K	SLIDER FL 169	1
33	71813169 K	LIFTRING FL 169x5	1
41	73605151	STAGE 149-0338-HC	1
42	71807149 K	SLIDER FL 149	1
43	71812149 K	LIFTRING FL 149/HP 150	1
51	73604151	STAGE 129-0338-HC	1
52	71807129 K	SLIDER FL 129/GF 129 (2 X 1/2)	1
53	71812129 K	LIFTRING FL 129/HP 129	1

Spare part list			
Pos	Part no.	Description	Qty.
61	73603151	STAGE 110-0338-HC	1
62	71807110 K	SLIDER FL 110/GF 110 (2 X 1/2)	1
63	71812110 K	LIFTRING FL 110	1
71	73602151	STAGE 091-0338-HC	1
72	71807091 K	SLIDER FL 091 (2 X 1/2)	1
73	71812091 K	LIFTRING FL 091	1
100	01745102	RETAINER KIT UMB D.65	1
101	73401151	PISTON B 072-0378-HC	1
102	71807072 K	SLIDER FL 072 (2 X 1/2)	1

Seal kit complete	
Part no.	Description
719 04 770K	Complete packset: Consists of all packsets with packset grease and o-ring.