

\* incl. 20 [-5; +30] mm pull out

3D model is available on request or [www.hyva.com](http://www.hyva.com)

Specifications		Max. pump flow		Tipping time	
Max. working pressure	250 bar	With KO <sup>1</sup>	195 L/min	With KO <sup>1</sup>	18 sec
Weight	281 kg	Without KO <sup>1</sup>	137 L/min	Without KO <sup>1</sup>	26 sec
Working volume	59 L	With KO <sup>1</sup> below -20°C	137 L/min	With KO <sup>1</sup> below -20°C	26 sec
Total volume	65 L	Without KO <sup>1</sup> below -20°C	96 L/min	Without KO <sup>1</sup> below -20°C	37 sec
Max. cyl. load (start tipping)	245 kN			Allowable lowering time	15 sec
Max. cyl. load (end of stroke) <sup>2</sup>	182 kN				
Max. cyl. load (end of stroke) <sup>3</sup>	212 kN				

**Technical notes**

- This cylinder is a lifting device only.
- It should not be used as a structural member and should not be subjected to side loads.
- Tipping valve must have a pressure relief at the cylinder port set not higher than max. working pressure.
- Verify max. cyl. load.
- Working temperature range is between -40°C and +80°C.
- Max. duration of extension is 0.5 hours (excluded hard chromed stages).
- Cylinder is painted black (RAL9005) with a min. thickness conforming to the 480 hours neutral salt spray test as per ISO 9227.
- <sup>1</sup> Hyva knock-off.
- <sup>2</sup> Unsubstantial unloading (sticky load).
- <sup>3</sup> Substantial unloading.

**Related documentation**

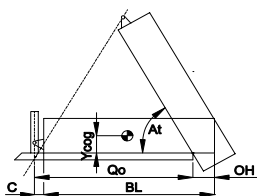
- Bracket options: 015BRA10 & 015BRA12
- Mounting instructions: CYL-0030
- Oil specifications: OIL-0011
- Spec sheet explanation: CYL-0041

**Configuration**

Extension	1	2	3	4	5	6	7	Total
Effective diameter [mm]	149	129	110	91				5125
Stroke* [mm]	1260	1285	1290	1290				

**Tipping weight**

For detailed tipping calculations please refer to: <https://tipper.hyva.com>

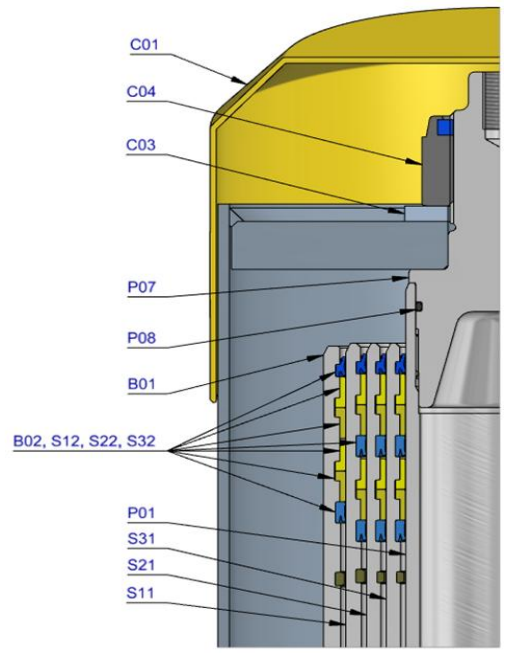


- BL body length
  - OH rear overhang
  - Ycog vert. pos. centre of gravity
  - Qo pivot length
  - C bracket length
  - At tipping angle
- $stroke \times 60 / Qo$

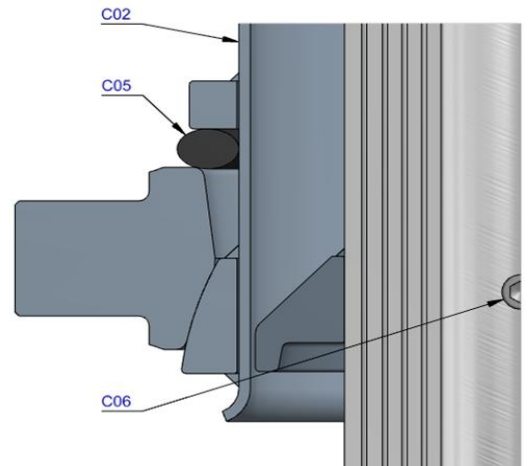
BL [mm]	6800	6450	6100	800	800	800	800	800
OH [mm]	500	500	500	500	500	500	500	500
At [°]	44	46	49	47	49	52	50	56
Ycog [mm]	46	50	56	47	52	60	50	56
C	46	50	56	47	52	60	50	56
At	49	54	56	47	52	60	50	56
	53	54	56	47	52	60	50	56

Tipping weight [ton] at maximum pressure of 250 bar for a vertically mounted cylinder and C is 229 mm

Pos.	Part no.	Description	Qty.
C01	71839050	DUST COVER FC LOW 15-273	1
C02	71737524	COVER 273-1315 PIN60 A360 SPH LOCK	1
C03	01702956K	WASHER M48 DIN 125B ZP	1
C04	01702907K	TOPNUT NYLOC M48x3 DIN 985 ZP	1
C05	01791953	O-RING COVER D.273	1
C06	15014550K	BOLT HSHC M12X30X1.75 Q8.8 DIN 912 ZP	1
P01	74472511	PISTON FL3 S 091-1515-HD-HC	1
P02	71807093K	SLIDER FL 091 (2 X 1/2) A35	1
P03	71851091K	OUTER STOPRING FL 091 A22	2
P04	71822705	BOTTOM PLATE PISTON FL 091 MK2 HD	1
P05	01745020K	CIRCLIP 78 DIN 472 (82.5x2.5)	1
P06	71870215K	O-RING PISTON BOTTOM 091	1
P07	71848200	PISTON HEAD FL3 091	1
P08	01226430K	O-RING 72.62 X 3.53 MM	1

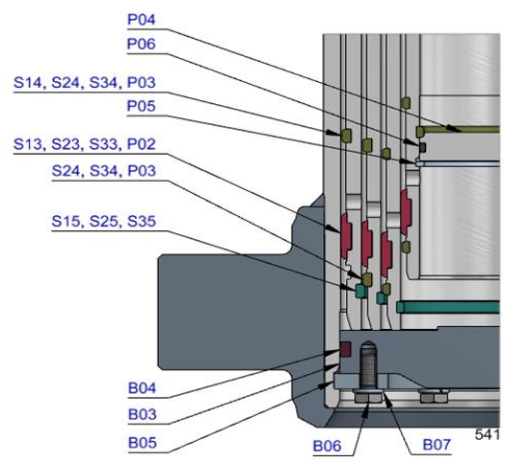


S31	74613510	STAGE FL2 110-1510-HD	1
S32	71808110K	PACKSET FL 110/HP 110 TANDEM SEAL	1
S33	71807112K	SLIDER FL 110 (2 X 1/2) A35	1
S34	71851110K	OUTER STOPRING FL 110 A22	2
S35	71852110K	LIFTRING FL 110 A22	1



S21	74614510	STAGE FL2 129-1510-HD	1
S22	71808129K	PACKSET FL 129/HP 129 TANDEM SEAL	1
S23	71807131K	SLIDER FL 129 (2 X 1/2) A35	1
S24	71851129K	OUTER STOPRING FL 129 A22	2
S25	71852129K	LIFTRING FL 129 A22	1

S11	74615510	STAGE FL2 149-1510-HD	1
S12	71808149K	PACKSET FL 149/HP 150 TANDEM SEAL	1
S13	71807151K	SLIDER FL 149 A35	1
S14	71851149K	OUTER STOPRING FL 149 A22	1
S15	71852149K	LIFTRING FL 149 A22	1



B01	74516512R1215	BASE FL2 169-1549-4/4BSAE-190-90-C273-HD	1
B02	71802169K	PACKSET FL 169	1
B03	71825425	BOTTOM PLATE FL2 169	1
B04	71870035K	SEAL BOTTOM PLATE FL 169	1
B05	71820169	LOCKING PLATE FL 169	3
B06	01732055K	BOLT HEX M8X20X1.25 SET 6 PCS	1
B07	01732559K	WASHER SPRING M8 SET 6 PCS	1

Seal kit complete

71908541K	Consists of all packsets with packset grease and O-rings
-----------	--

Notes

The inner stopring and piston bottom are pre-mounted on spare bases, stage and pistons. Therefore, when ordering new tubes, it is not required to order these parts separately.

For repair instructions see: CYL-0040. Serial no. is located on type plate and near type plate support.